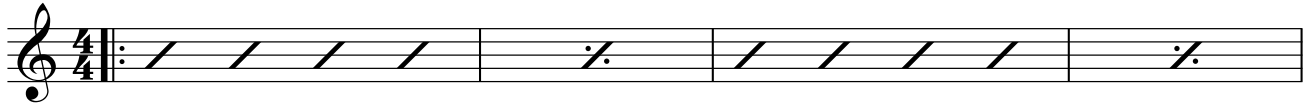


# Corcovado (Quite Nights of Quiet Stars)

A.C. JOBIM

**A**

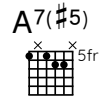


5

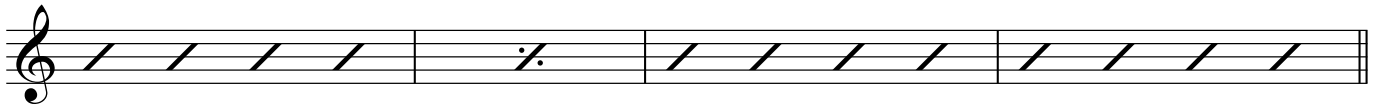


**B**

9



13



**A**

17



21



C

25

Fm7 Fm6 Em7 Am7

Detailed description: This block shows the first line of music, starting at measure 25. It features four guitar chord diagrams: Fm7 (x23214), Fm6 (x23214), Em7 (022143), and Am7 (x22345). Below each diagram is a treble clef staff with a single measure of music containing a diagonal slash, representing a barre.

29

Dm7 G7 Em7(b5) A7(#5)

Detailed description: This block shows the second line of music, starting at measure 29. It features four guitar chord diagrams: Dm7 (x23214), G7 (x23214), Em7(b5) (x23214), and A7(#5) (x22345). Below each diagram is a treble clef staff with a single measure of music containing a diagonal slash, representing a barre.

33

Dm7 G7 C%9

Detailed description: This block shows the third line of music, starting at measure 33. It features three guitar chord diagrams: Dm7 (x23214), G7 (x23214), and C%9 (x23214). Below each diagram is a treble clef staff with a single measure of music containing a diagonal slash, representing a barre. The final measure of this line has a double bar line and the text "Last time only" written below it.