

# GEORGIA ON MY MIND

Carmichael & Gorrell

**A**

Fmaj7



Em7(b5)



A7



Dm



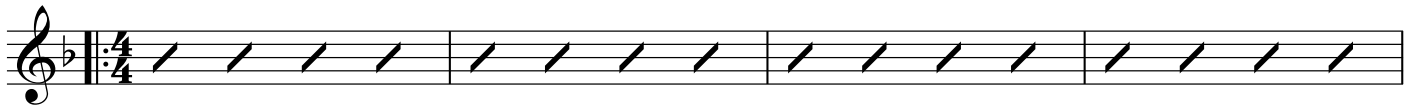
Dm/C



G/B



Bbm6



1.

F/A



D7



Gm7



C7



F6



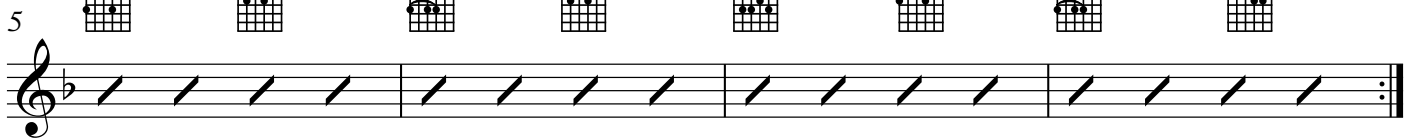
Gb°



Gm7



C7(#5)



Fmaj7



Bbm6



Fmaj7



Em7(b5)



A7



**B**

Dm



Gm6



Dm



Bb7



Dm



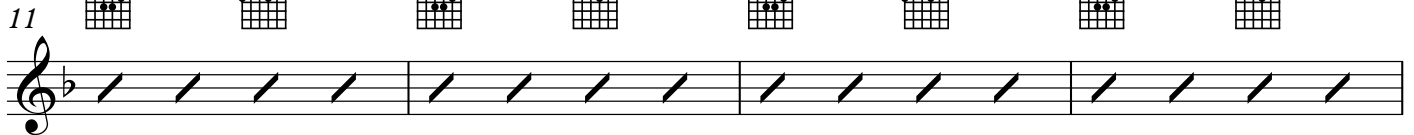
Gm6



Dm



G7



Dm



Gm6



Dm



E7



Am7



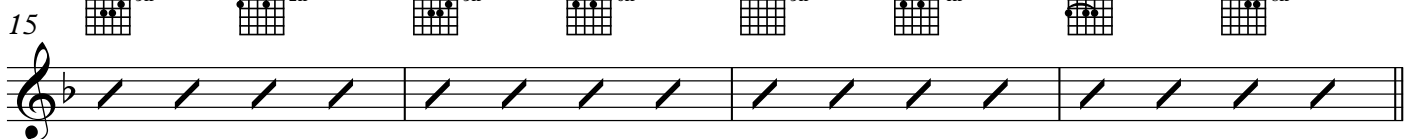
D7(b9)



Gm7



C7(#5)



**A**

Fmaj7



Em7(b5)



A7



Dm



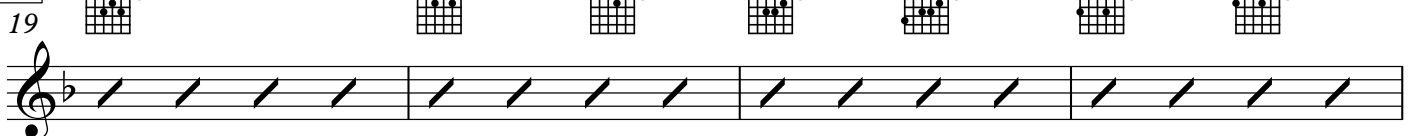
Dm/C



G/B



Bbm6



F/A



D7



Gm7



C7



Fmaj7



Bbm6



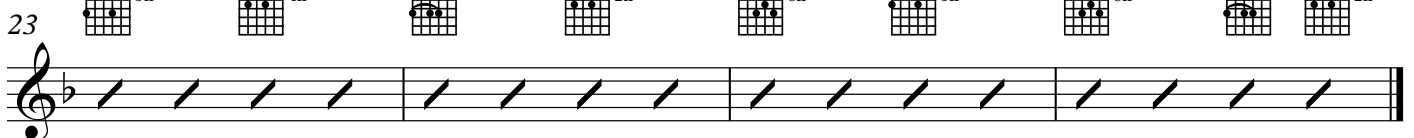
Fmaj7



Gm7



C7



# HARMONIC ANALYSIS

**AA**

**I** **( ii** **V/vi** **Vi** **ii** **II** **iv**

27 Fmaj7 Em<sup>7(b5)</sup> A<sup>7</sup> Dm Dm/C G/B Bbm<sup>6</sup>

ii-V-i to relative minor

**I** **VI<sup>7</sup>** **V/ii** **ii** **V** | 1 **I** **#i<sup>o</sup>** **ii** **V** | 2. **I** **iv** **I**

31 F/A D<sup>7</sup> Gm<sup>7</sup> C<sup>7</sup> F<sup>6</sup> Gb<sup>o</sup> Gm<sup>7</sup> C<sup>7</sup>(#5) Fmaj7 Bbm<sup>6</sup> Fmaj7 Em<sup>7(b5)</sup> A<sup>7</sup>

**B**

**i** **iv** **i** **VI<sup>7</sup>** **i** **iv** **i** **IV<sup>7</sup>**

37 Dm Gm<sup>6</sup> Dm Bb<sup>7</sup> Dm Gm<sup>6</sup> Dm G<sup>7</sup>

**i** **iv** **i** **V/iii** **iii** **VI<sup>7</sup>** **V/ii** **ii** **V**

41 Dm Gm<sup>6</sup> Dm E<sup>7</sup> Am<sup>7</sup> D<sup>7</sup>(b9) Gm<sup>7</sup> C<sup>7</sup>(#5)

**A**

**I** **( ii** **V/vi** **Vi** **ii** **II** **iv**

45 Fmaj7 Em<sup>7(b5)</sup> A<sup>7</sup> Dm Dm/C G/B Bbm<sup>6</sup>

ii-V-i to relative minor

**I** **VI<sup>7</sup>** **V/ii** **ii** **V** **I** **iv** **I** **ii** **V**

49 F/A D<sup>7</sup> Gm<sup>7</sup> C<sup>7</sup> Fmaj7 Bbm<sup>6</sup> Fmaj7 Gm<sup>7</sup> C<sup>7</sup>