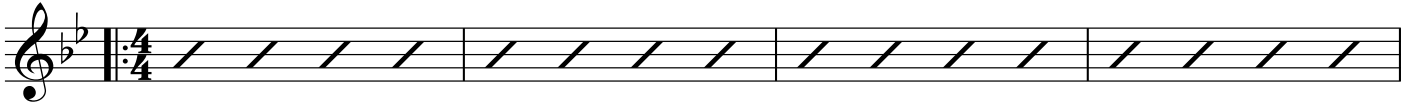


I GOT RHYTHM

George and Ira Gershwin

AA



5

1.

2.

B

A

22

1. Variation to bars 1-4

26

B♭maj7 6fr G7 9fr Cm7 8fr F7 7fr Dm7 10fr G7 9fr Cm7 8fr F7 7fr

1a. Variation to bars 1-4

30

B♭maj7 6fr G7 9fr Cm7 8fr F7 7fr B♭maj7 6fr G7 9fr Cm7 8fr F7 7fr

2. Variation to bars 5-8

34

B♭maj7 6fr B♭7 6fr E♭maj7 6fr E♭m6 5fr Dm7 5fr G7 3fr Cm7 3fr F7 7fr

2a. Variation to bars 5-8

38

Fm7 8fr B♭7 6fr E♭maj7 6fr A♭7 4fr Dm7 5fr G7 3fr Cm7 3fr F7 7fr

3. Variation to the b section: add the ii of the V

42

Am⁷ D⁷ Dm⁷ G⁷

Am⁷ 5fr D⁷ 4fr Dm⁷ 5fr G⁷ 3fr

46

Gm⁷ C⁷ Cm⁷ F⁷

Gm⁷ 3fr C⁷ 8fr Cm⁷ 8fr F⁷ 7fr

HARMONIC ANALYSIS

AA

50 Bb⁶ Gm⁷ Cm⁷ F⁷ Dm⁷ G⁷ Cm⁷ F⁷

54 Bb⁶ Bb⁷/D Eb⁷ Eb^o Bb⁶/F F⁷ 1. Bb⁶ F⁷ 2. Bb⁶

B

59 D⁷ G⁷

63 C⁷ F⁷

A

67 B \flat 6 Gm7 Cm7 F7 Dm7 G7 Cm7 F7

A musical staff in G major (one sharp) with a treble clef and a key signature of one flat (B-flat). The staff contains four measures of music, each represented by a slash. Above the staff, the chords for each measure are: B \flat 6, Gm7, Cm7, F7, Dm7, G7, Cm7, and F7.

71 B \flat 6 B \flat 7/D E \flat 7 E \flat ° B \flat 6/F F7 B \flat 6 F7

A musical staff in G major (one sharp) with a treble clef and a key signature of one flat (B-flat). The staff contains four measures of music, each represented by a slash. Above the staff, the chords for each measure are: B \flat 6, B \flat 7/D, E \flat 7, E \flat °, B \flat 6/F, F7, B \flat 6, and F7. The staff ends with a double bar line.