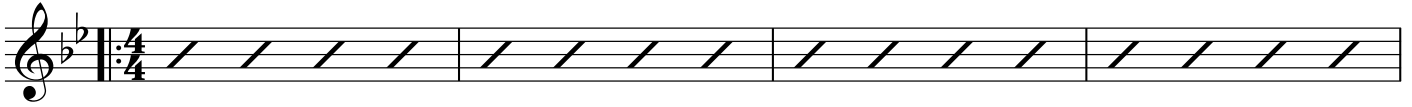


# I GOT RHYTHM

George and Ira Gershwin

AA

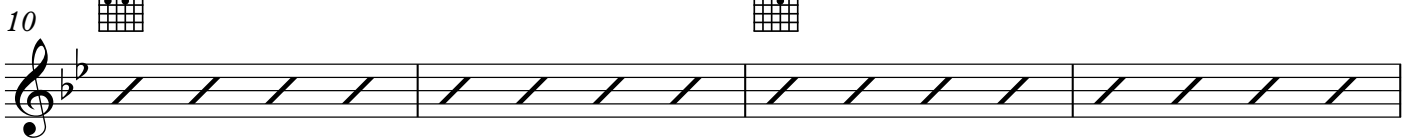


5

1. Bb6 F7

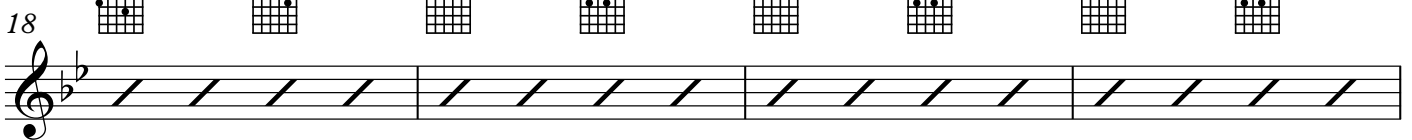
2. Bb6

B



14

A



22

1. Variation to bars 1-4

26

B♭maj7 6fr G7 9fr Cm7 8fr F7 7fr Dm7 10fr G7 9fr Cm7 8fr F7 7fr

1a. Variation to bars 1-4

30

B♭maj7 6fr G7 9fr Cm7 8fr F7 7fr B♭maj7 6fr G7 9fr Cm7 8fr F7 7fr

2. Variation to bars 5-8

34

B♭maj7 6fr B♭7 6fr Ebmaj7 6fr Ebm6 5fr Dm7 5fr G7 3fr Cm7 3fr F7

2a. Variation to bars 5-8

38

Fm7 8fr B♭7 6fr Ebmaj7 6fr Ab7 4fr Dm7 5fr G7 3fr Cm7 3fr F7

3. Variation to the b section: add the ii of the V

42

Am<sup>7</sup> 5fr

D<sup>7</sup> 4fr

Dm<sup>7</sup> 5fr

G<sup>7</sup> 3fr

46

Gm<sup>7</sup> 3fr

C<sup>7</sup> 8fr

Cm<sup>7</sup> 8fr

F<sup>7</sup> 7fr

# HARMONIC ANALYSIS

**AA**

**I**      **Vi**      **ii**      **V**      **ii**      **V**      **ii**      **V**

50      Bb<sup>6</sup>      Gm<sup>7</sup>      Cm<sup>7</sup>      F<sup>7</sup>      Dm<sup>7</sup>      G<sup>7</sup>      Cm<sup>7</sup>      F<sup>7</sup>

**ii-V in C major**

**I**      **I7<sup>6</sup>**      **Iv<sup>7</sup>**      **#IV<sup>o</sup>**      **I<sub>4</sub><sup>6</sup>**      **V**      **I**      **V**      **I**

54      Bb<sup>6</sup>      Bb<sup>7</sup>/D      Eb<sup>7</sup>      Eb<sup>o</sup>      Bb<sup>6</sup>/F      F<sup>7</sup>      1. Bb<sup>6</sup>      F<sup>7</sup>      2. Bb<sup>6</sup>

**B**

59      **V**      **V**

D<sup>7</sup>      G<sup>7</sup>

**Dominants moving in 4ths**

**V**      **V**


63      C<sup>7</sup>      F<sup>7</sup>

**A**

67    B $\flat$ <sup>6</sup>    Gm<sup>7</sup>    Cm<sup>7</sup>    F<sup>7</sup>    Dm<sup>7</sup>    G<sup>7</sup>    Cm<sup>7</sup>    F<sup>7</sup>

A musical staff in G minor (one flat) with a treble clef. The staff contains four measures of music, each represented by a series of diagonal slashes. The measures are separated by vertical bar lines. Above the staff, the chord symbols B $\flat$ <sup>6</sup>, Gm<sup>7</sup>, Cm<sup>7</sup>, F<sup>7</sup>, Dm<sup>7</sup>, G<sup>7</sup>, Cm<sup>7</sup>, and F<sup>7</sup> are aligned with the measures.

71    B $\flat$ <sup>6</sup>    B $\flat$ <sup>7</sup>/D    E $\flat$ <sup>7</sup>    E $\flat$ <sup>o</sup>    B $\flat$ <sup>6</sup>/F    F<sup>7</sup>    B $\flat$ <sup>6</sup>    F<sup>7</sup>

A musical staff in G minor (one flat) with a treble clef. The staff contains four measures of music, each represented by a series of diagonal slashes. The measures are separated by vertical bar lines. Above the staff, the chord symbols B $\flat$ <sup>6</sup>, B $\flat$ <sup>7</sup>/D, E $\flat$ <sup>7</sup>, E $\flat$ <sup>o</sup>, B $\flat$ <sup>6</sup>/F, F<sup>7</sup>, B $\flat$ <sup>6</sup>, and F<sup>7</sup> are aligned with the measures. The staff ends with a double bar line.