


NIGHT AND DAY


AA

COLE PORTER


1 Dm^{7(b5)} G⁷ Cmaj⁷



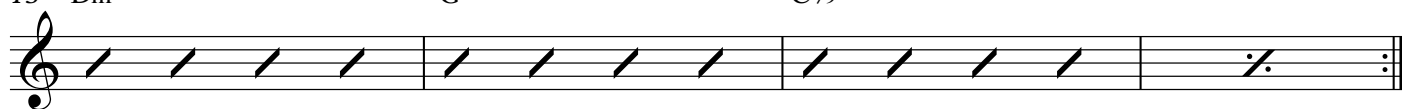
5 Dm^{7(b5)} G⁷ Cmaj⁷



9 F#m^{7(b5)} Fm⁷ Em⁷ Eb^{o7}

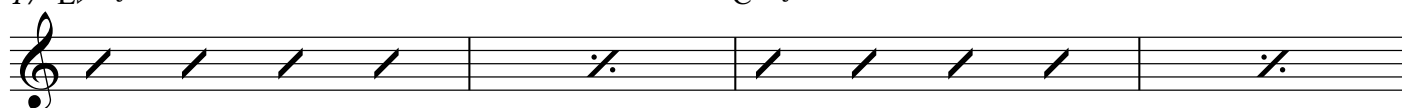


13 Dm⁷ G⁷ C%⁹

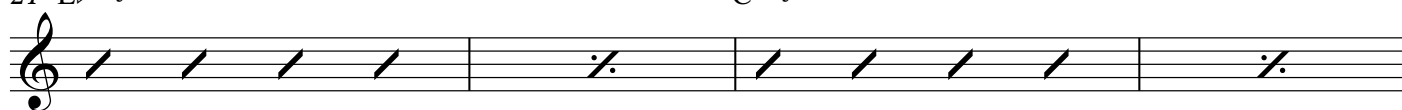


B


17 Ebmaj⁷ Cmaj⁷




21 Ebmaj⁷ Cmaj⁷



25 F#m^{7(b5)} Fm⁷ Em⁷ Eb^{o7}



29 Dm⁷ G⁷ C%⁹



AA

33

Dm⁷(b5) 5fr

G⁷ 3fr

Cmaj⁷ 3fr

A musical staff with a treble clef and a repeat sign at the beginning. It contains four measures of music, each with a slash indicating a guitar chord. Above the staff are three guitar chord diagrams: Dm⁷(b5) at 5 fret, G⁷ at 3 fret, and Cmaj⁷ at 3 fret. The staff ends with a double bar line and repeat dots.

37

Dm⁷(b5) 5fr

G⁷ 3fr

Cmaj⁷ 3fr

A musical staff with a treble clef and a repeat sign at the beginning. It contains four measures of music, each with a slash indicating a guitar chord. Above the staff are three guitar chord diagrams: Dm⁷(b5) at 5 fret, G⁷ at 3 fret, and Cmaj⁷ at 3 fret. The staff ends with a double bar line and repeat dots.

41

F#m⁷(b5) 9fr

Fm⁷ 8fr

Em⁷ 7fr

Eb^{o7} 5fr

A musical staff with a treble clef and a repeat sign at the beginning. It contains four measures of music, each with a slash indicating a guitar chord. Above the staff are four guitar chord diagrams: F#m⁷(b5) at 9 fret, Fm⁷ at 8 fret, Em⁷ at 7 fret, and Eb^{o7} at 5 fret. The staff ends with a double bar line and repeat dots.

45

Dm⁷ 5fr

G⁷ 3fr

C^{6/9}

A musical staff with a treble clef and a repeat sign at the beginning. It contains four measures of music, each with a slash indicating a guitar chord. Above the staff are three guitar chord diagrams: Dm⁷ at 5 fret, G⁷ at 3 fret, and C^{6/9}. The staff ends with a double bar line and repeat dots.

B

49

Ebmaj⁷ 6fr

Cmaj⁷ 3fr

Ebmaj⁷ 6fr

Cmaj⁷ 3fr

A musical staff with a treble clef and a repeat sign at the beginning. It contains eight measures of music, each with a slash indicating a guitar chord. Above the staff are four guitar chord diagrams: Ebmaj⁷ at 6 fret, Cmaj⁷ at 3 fret, Ebmaj⁷ at 6 fret, and Cmaj⁷ at 3 fret. The staff ends with a double bar line and repeat dots.

57

F#m⁷(b5) 9fr

Fm⁷ 8fr

Em⁷ 7fr

Eb^{o7} 5fr

A musical staff with a treble clef and a repeat sign at the beginning. It contains four measures of music, each with a slash indicating a guitar chord. Above the staff are four guitar chord diagrams: F#m⁷(b5) at 9 fret, Fm⁷ at 8 fret, Em⁷ at 7 fret, and Eb^{o7} at 5 fret. The staff ends with a double bar line and repeat dots.

61

Dm⁷ 5fr

G⁷ 3fr

C^{6/9}

A musical staff with a treble clef and a repeat sign at the beginning. It contains four measures of music, each with a slash indicating a guitar chord. Above the staff are three guitar chord diagrams: Dm⁷ at 5 fret, G⁷ at 3 fret, and C^{6/9}. The staff ends with a double bar line and repeat dots.

A BARS 1-4 VARIATIONS

65

$A\flat$ maj7 G^7 C maj7

65 66 67 68

69

F m⁹ $B\flat^7$ C maj7

69 70 71 72

HARMONIC ANALYSIS

4
AA

ii7b5

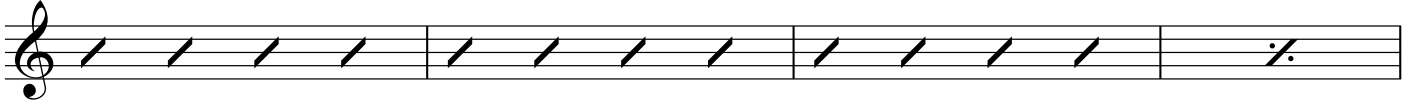
73 Dm7(b5)

V

G7

I

Cmaj7



ii

77 Dm7(b5)

V

G7

I

Cmaj7



#IV°

81 F#m7(b5)

iv

Fm7

iii

Em7

biii°

Eb°7



ii

85 Dm7

V

G7

I

C%9



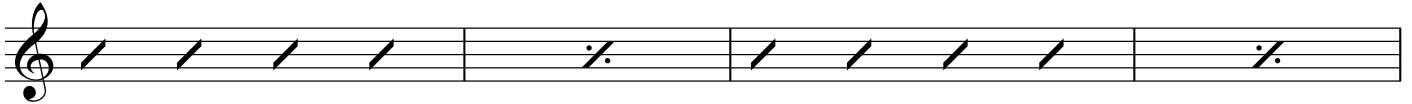
B

bIII

89 Ebmaj7

I

Cmaj7

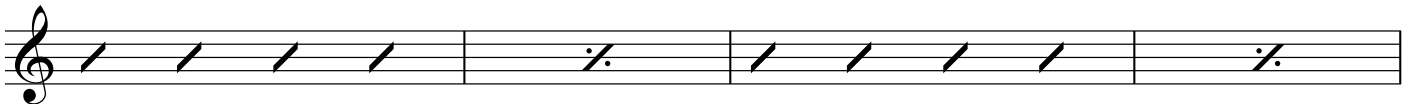


bIII

93 Ebmaj7

I

Cmaj7



#IV°

97 F#m7(b5)

iv

Fm7

iii

Em7

biii°

Eb°7



ii

101 Dm7

V

G7

I

C%9

