

ON GREEN DOLPHIN STREET

LATIN

KAPER/WASHINGTON

Cmaj7



Cm7



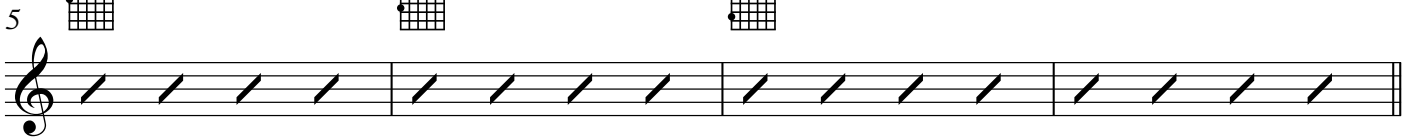
D7/C



Db7/C



C



SWING

1.

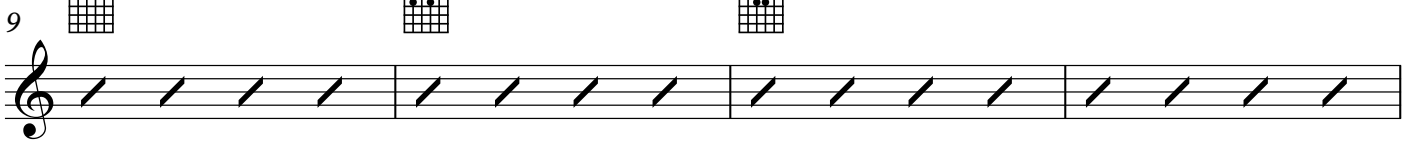
Dm7



G7



Cmaj7



Fm7



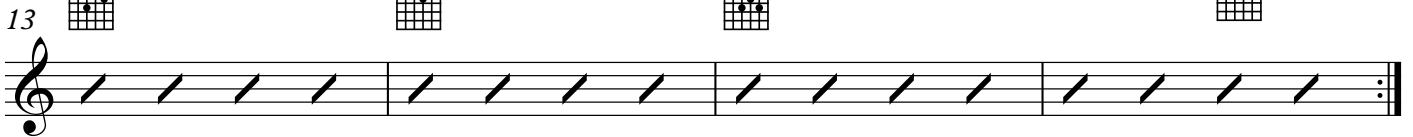
Bb7



Ebmaj7



G7



SWING

2.

Dm7



Dm7/C



Bm7(b5)



E7(b9)



Am7



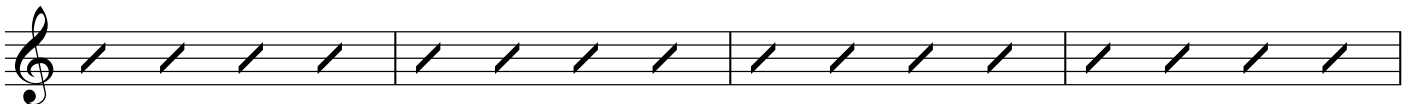
Am7/G



F#m7(b5)



B7



Em7



A7



Dm7



G7



Cmaj7



(Dm7 G7)



ANALYSIS

I **i**
Cmaj7 Cm7

II7 **bII7** **I**
D7/C Db7/C Cmaj7

1.
ii **V** **I**
Dm7 G7 Cmaj7

ii **V** **I** **V**
Fm7 Bb7 Ebmaj7 G7

ii-V-I in Eb

2.
ii **ii** **V** **i** **ii** **V**
Dm7 Dm7/C Bm7(b5) E7(b9) Am7 Am7/G F#m7(b5) B7

ii-V-I in Am ii-V in Em

ii **V** **ii** **V** **I** **ii** **V**
Em7 A7 Dm7 G7 Cmaj7 (Dm7 G7)

ii-V in D